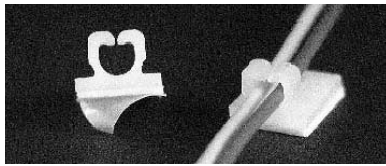
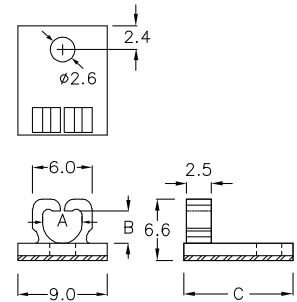


## Plastic Wire Saddles Adhesive Base



### Specifications: RoHS COMPLIANT

**Material:** Nylon 6/6  
**UL Rating:** 94V-2  
**Color:** Natural  
**Adhesive:** 3M™ Form Tape

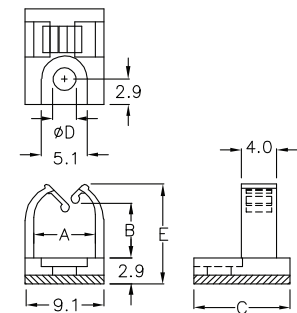


Part Number	Ref. "A", mm [in.]	Ref. "B", mm [in.]	Ref. "C", mm [in.]	Standard Package
Optional Mounting: M2.7 Screw				
PCMAH-CHF-4A	4.0 [0.157]	3.3 [0.130]	11.0 [0.433]	1000

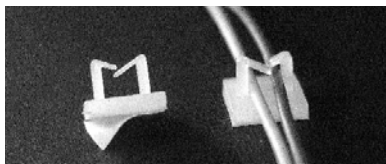


### Specifications: RoHS COMPLIANT

**Material:** Nylon 6/6  
**UL Rating:** 94V-2  
**Color:** Natural  
**Adhesive:** 3M™ Form Tape

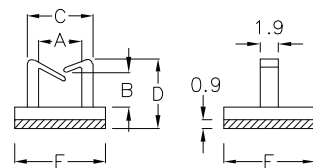


Part Number	Ref. "A", mm [in.]	Ref. "B", mm [in.]	Ref. "C", mm [in.]	Ref. "D", mm [in.]	Ref. "E", mm [in.]	Standard Package
Optional Mounting: M3 Screw						
PCMAH-CHF-8	6.9 [0.272]	6.2 [0.244]	11.0 [0.433]	2.7 [0.106]	11.3 [0.445]	1000
PCMAH-CHF-8A	6.9 [0.272]	6.2 [0.244]	11.0 [0.433]	3.1 [0.122]	11.3 [0.445]	
PCMAH-CHF-8C	7.0 [0.276]	10.0 [0.394]	10.9 [0.429]	2.7 [0.106]	15.1 [0.594]	

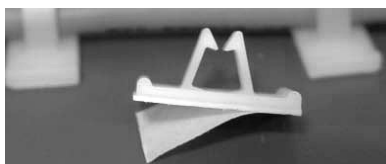


### Specifications: RoHS COMPLIANT

**Material:** Nylon 6/6  
**UL Rating:** 94V-2  
**Color:** Natural  
**Adhesive:** 3M™ Form Tape

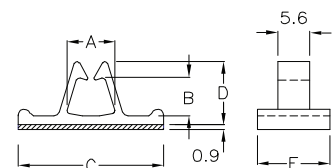


Part Number	Ref. "A", mm [in.]	Ref. "B", mm [in.]	Ref. "C", mm [in.]	Ref. "D", mm [in.]	Ref. "E", mm [in.]	Ref. "F", mm [in.]	Standard Package
PCMAH-CHF-20C	4.5 [0.177]	3.6 [0.142]	7.0 [0.276]	7.3 [0.287]	9.6 [0.378]	9.6 [0.378]	2000
PCMAH-CHF-20H	4.5 [0.177]	3.6 [0.142]	6.9 [0.272]	7.4 [0.291]	8.0 [0.315]	8.8 [0.346]	



### Specifications: RoHS COMPLIANT

**Material:** Nylon 6/6  
**UL Rating:** 94V-2  
**Color:** Natural  
**Adhesive:** 3M™ Form Tape

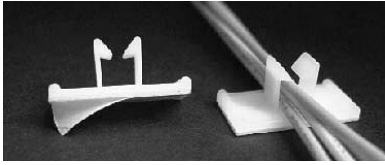


Part Number	Ref. "A", mm [in.]	Ref. "B", mm [in.]	Ref. "C", mm [in.]	Ref. "D", mm [in.]	Ref. "E", mm [in.]	Standard Package
PCMAH-CHF-15A	8.4 [0.331]	6.7 [0.264]	25.5 [1.004]	11.2 [0.441]	12.7 [0.500]	500
PCMAH-CHF-15F	8.4 [0.331]	6.0 [0.236]	17.6 [0.693]	10.5 [0.413]	8.9 [0.350]	

all dimension units in millimeter (mm) unless noted otherwise

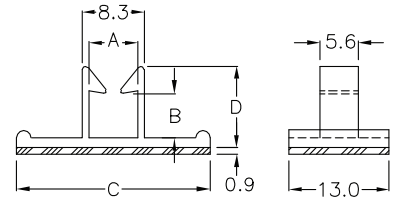
www.vaisis.com | P: 626-795-6696 | F: 626-795-6896 | Email: sales@vaisis.com

**Plastic Wire Saddles**  
Adhesive Base

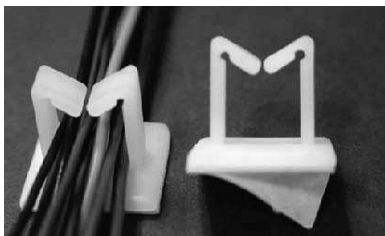


**Specifications:** RoHS COMPLIANT

**Material:** Nylon 6/6  
**UL Rating:** 94V-2  
**Color:** Natural  
**Adhesive:** 3M™ Form Tape

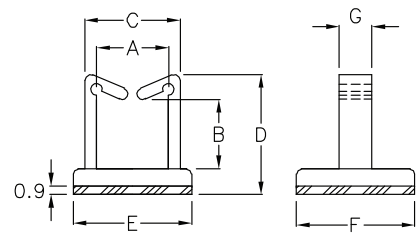


Part Number	Ref. "A", mm [in.]	Ref. "B", mm [in.]	Ref. "C", mm [in.]	Ref. "D", mm [in.]	Standard Package
PCMAH-CHF-15	6.4 [0.252]	5.8 [0.228]	25.5 [1.004]	10.7 [0.421]	500
PCMAH-CHF-15C	6.4 [0.252]	4.5 [0.177]	19.0 [0.748]	9.5 [0.374]	



**Specifications:** RoHS COMPLIANT

**Material:** Nylon 6/6  
**UL Rating:** 94V-2  
**Color:** Natural  
**Adhesive:** 3M™ Form Tape

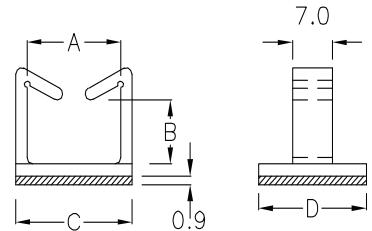


Part Number	Ref. "A", mm [in.]	Ref. "B", mm [in.]	Ref. "C", mm [in.]	Ref. "D", mm [in.]	Ref. "E", mm [in.]	Ref. "F", mm [in.]	Ref. "G", mm [in.]	Standard Package
PCMAH-CHF-20	11.6 [0.457]	10.2 [0.402]	15.6 [0.614]	18.0 [0.709]	21.0 [0.827]	19.0 [0.748]	5.3 [0.209]	500
PCMAH-CHF-20A	11.2 [0.441]	8.1 [0.319]	15.2 [0.598]	16.4 [0.646]	21.0 [0.827]	19.0 [0.748]	5.3 [0.209]	
PCMAH-CHF-20F	11.5 [0.453]	10.0 [0.394]	15.4 [0.606]	18.0 [0.709]	17.0 [0.669]	12.5 [0.492]	5.3 [0.209]	
PCMAH-CHF-20K	16.6 [0.654]	9.8 [0.386]	20.6 [0.811]	18.0 [0.709]	26.4 [1.039]	19.0 [0.748]	7.0 [0.276]	
PCMAH-CHF-20D	20.0 [0.787]	10.0 [0.394]	23.8 [0.937]	18.0 [0.709]	25.7 [1.012]	19.0 [0.748]	5.3 [0.209]	



**Specifications:** RoHS COMPLIANT

**Material:** Nylon 6/6  
**UL Rating:** 94V-2  
**Color:** Natural  
**Adhesive:** 3M™ Form Tape

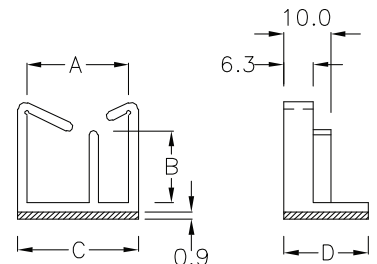


Part Number	Ref. "A", mm [in.]	Ref. "B", mm [in.]	Ref. "C", mm [in.]	Ref. "D", mm [in.]	Standard Package
PCMAH-CHF-20L	16.5 [0.650]	10.2 [0.402]	20.5 [0.807]	18.9 [0.744]	200



**Specifications:** RoHS COMPLIANT

**Material:** Nylon 6/6  
**UL Rating:** 94V-2  
**Color:** Natural  
**Adhesive:** 3M™ Form Tape

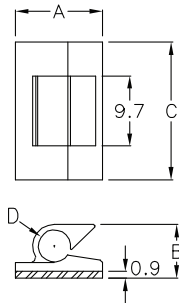


Part Number	Ref. "A", mm [in.]	Ref. "B", mm [in.]	Ref. "C", mm [in.]	Ref. "D", mm [in.]	Standard Package
PCMAH-CHF-21A	21.7 [0.854]	15.2 [0.598]	25.7 [1.012]	18.0 [0.709]	200

## Side Entry Plastic Wire Saddles Adhesive Base



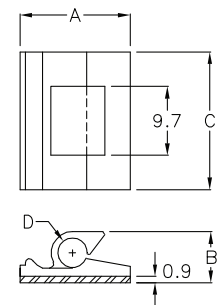
**Specifications:** RoHS COMPLIANT  
**Material:** Nylon 6/6  
**UL Rating:** 94V-2  
**Color:** Natural  
**Adhesive:** 3M™ Form Tape  
**Cable Dia.:** ø4.0 mm - ø5.0 mm



Part Number	Ref. "A", mm [in.]	Ref. "B", mm [in.]	Ref. "C", mm [in.]	Ref. "D", ø, mm [in.]	Standard Package
PCMAH-FW-1P	12.0 [0.472]	7.4 [0.291]	19.0 [0.748]	ø4.5 [0.177]	500



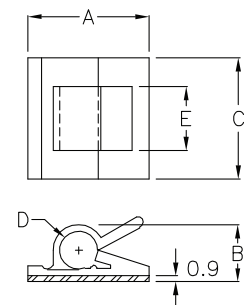
**Specifications:** RoHS COMPLIANT  
**Material:** Nylon 6/6  
**UL Rating:** 94V-2  
**Color:** Natural  
**Adhesive:** 3M™ Form Tape  
**Cable Dia.:** ø4.0 mm - ø5.0 mm



Part Number	Ref. "A", mm [in.]	Ref. "B", mm [in.]	Ref. "C", mm [in.]	Ref. "D", ø, mm [in.]	Standard Package
PCMAH-FW-1	16.0 [0.630]	7.3 [0.287]	18.9 [0.744]	ø4.4 [0.173]	500



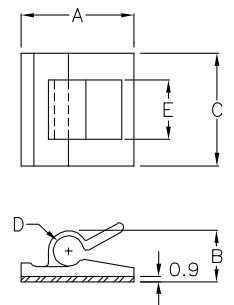
**Specifications:** RoHS COMPLIANT  
**Material:** Nylon 6/6  
**UL Rating:** 94V-2  
**Color:** Natural  
**Adhesive:** 3M™ Form Tape



Part Number	Ref. "A", mm [in.]	Ref. "B", mm [in.]	Ref. "C", mm [in.]	Ref. "D", ø, mm [in.]	Ref. "E", mm [in.]	Standard Package
PCMAH-FW-1A	19.0 [0.748]	9.0 [0.354]	20.2 [0.795]	ø6.0 [0.236]	10.2 [0.402]	500
PCMAH-FW-1AM	19.0 [0.748]	8.9 [0.350]	19.0 [0.748]	ø5.2 [0.205]	10.2 [0.402]	



**Specifications:** RoHS COMPLIANT  
**Material:** Nylon 6/6  
**UL Rating:** 94V-2  
**Color:** Natural  
**Adhesive:** 3M™ Form Tape



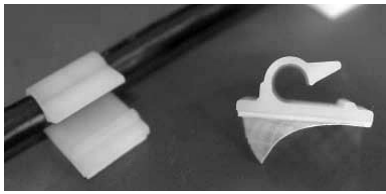
Part Number	Ref. "A", mm [in.]	Ref. "B", mm [in.]	Ref. "C", mm [in.]	Ref. "D", ø, mm [in.]	Ref. "E", mm [in.]	Standard Package
PCMAH-FW-1AK	16.0 [0.630]	7.4 [0.291]	19.0 [0.748]	ø4.0 [0.157]	10.2 [0.402]	500
PCMAH-FW-1AP	16.0 [0.630]	6.6 [0.260]	16.0 [0.630]	ø3.0 [0.118]	8.5 [0.335]	
PCMAH-FW-1AQ	16.0 [0.630]	7.5 [0.295]	19.0 [0.748]	ø4.0 [0.157]	10.2 [0.402]	
PCMAH-FW-1AR	16.0 [0.630]	7.5 [0.295]	19.0 [0.748]	ø3.6 [0.142]	10.2 [0.402]	

all dimension units in millimeter (mm) unless noted otherwise

www.vaisis.com | P: 626-795-6696 | F: 626-795-6896 | Email: sales@vaisis.com

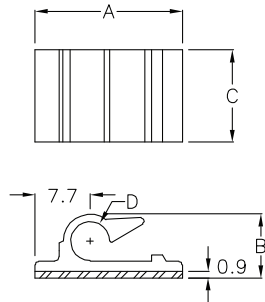
## Side Entry Plastic Wire Saddles

### Adhesive Base



**Specifications:** RoHS COMPLIANT

**Material:** Nylon 6/6  
**UL Rating:** 94V-2  
**Color:** Natural  
**Adhesive:** 3M™ Form Tape

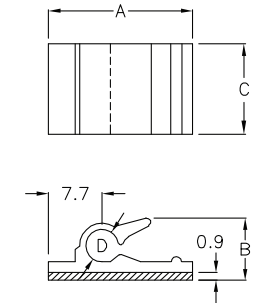


Part Number	Ref. "A", mm [in.]	Ref. "B", mm [in.]	Ref. "C", mm [in.]	Ref. "D", ø, mm [in.]	Standard Package
PCMAH-FW-1B	20.7 [0.815]	9.1 [0.358]	13.0 [0.512]	ø5.6 [0.220]	500
PCMAH-FW-1C	20.7 [0.815]	7.6 [0.299]	10.0 [0.394]	ø3.6 [0.142]	

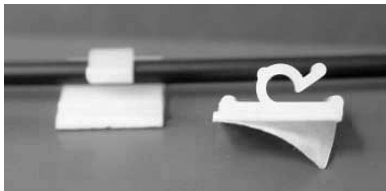


**Specifications:** RoHS COMPLIANT

**Material:** Nylon 6/6  
**UL Rating:** 94V-2  
**Color:** Natural  
**Adhesive:** 3M™ Form Tape  
 Generic Form Tape

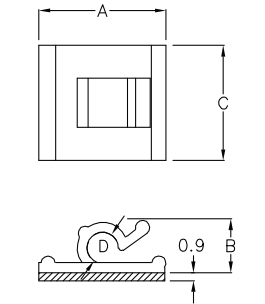


Part Number	Ref. "A", mm [in.]	Ref. "B", mm [in.]	Ref. "C", mm [in.]	Ref. "D", ø, mm [in.]	Standard Package
PCMAH-FW-2F	20.8 [0.819]	8.7 [0.343]	13.0 [0.512]	ø4.7 [0.185]	500



**Specifications:** RoHS COMPLIANT

**Material:** Nylon 6/6  
**UL Rating:** 94V-2  
**Color:** Natural  
**Adhesive:** 3M™ Form Tape



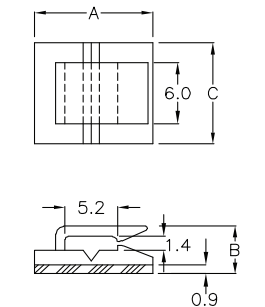
Part Number	Ref. "A", mm [in.]	Ref. "B", mm [in.]	Ref. "C", mm [in.]	Ref. "D", ø, mm [in.]	Standard Package
PCMAH-FW-1H	13.2 [0.520]	5.2 [0.205]	12.0 [0.472]	ø3.3 [0.130]	1000



**Specifications:** RoHS COMPLIANT

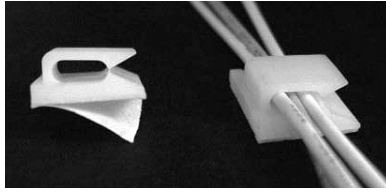
**Material:** Nylon 6/6  
**UL Rating:** 94V-2  
**Color:** Natural  
**Adhesive:** 3M™ Form Tape

**Flexible to Fit Contoured Surface**



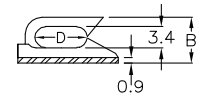
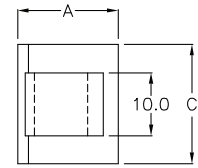
Part Number	Ref. "A", mm [in.]	Ref. "B", mm [in.]	Ref. "C", mm [in.]	Standard Package
PCMAH-FW-1F	12.0 [0.472]	4.7 [0.185]	10.0 [0.394]	1000

## Side Entry Plastic Wire Saddles Adhesive Base

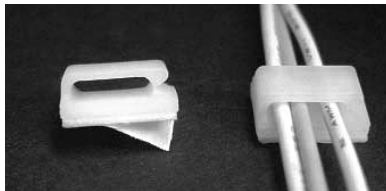


### Specifications: RoHS COMPLIANT

**Material:** Nylon 6/6  
**UL Rating:** 94V-2  
**Color:** Natural  
**Adhesive:** 3M™ Form Tape

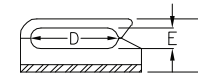
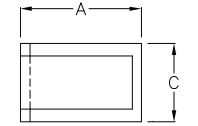


Part Number	Ref. "A", mm [in.]	Ref. "B", mm [in.]	Ref. "C", mm [in.]	Ref. "D", mm [in.]	Standard Package
PCMAH-FW-2	16.0 [0.630]	7.3 [0.287]	19.0 [0.748]	8.3 [0.327]	500
PCMAH-FW-2P	14.0 [0.551]	7.3 [0.287]	16.0 [0.630]	6.3 [0.248]	
PCMAH-FW-2Q	18.0 [0.709]	7.3 [0.287]	19.0 [0.748]	10.2 [0.402]	

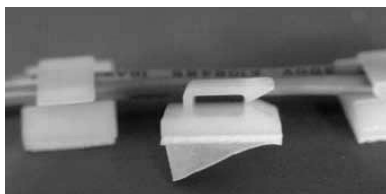


### Specifications: RoHS COMPLIANT

**Material:** Nylon 6/6  
**UL Rating:** 94V-2  
**Color:** Natural  
**Adhesive:** 3M™ Form Tape

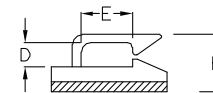
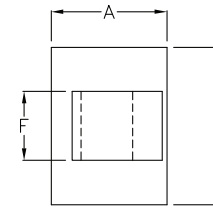


Part Number	Ref. "A", mm [in.]	Ref. "B", mm [in.]	Ref. "C", mm [in.]	Ref. "D", mm [in.]	Ref. "E", mm [in.]	Standard Package
PCMAH-FW-2M	14.5 [0.571]	6.5 [0.256]	9.5 [0.374]	10.3 [0.406]	2.5 [0.098]	500
PCMAH-FW-2MA	16.7 [0.657]	6.7 [0.264]	13.0 [0.512]	11.6 [0.457]	3.1 [0.122]	
PCMAH-FW-2MP	12.0 [0.472]	6.4 [0.252]	9.5 [0.374]	6.3 [0.248]	2.5 [0.098]	
PCMAH-FW-2MQ	10.0 [0.394]	6.0 [0.236]	9.5 [0.374]	4.3 [0.169]	2.5 [0.098]	
PCMAH-FW-2S	12.5 [0.492]	6.1 [0.240]	9.5 [0.374]	8.4 [0.331]	2.5 [0.098]	
PCMAH-FW-2SP	12.7 [0.500]	6.4 [0.252]	12.5 [0.492]	8.2 [0.323]	2.5 [0.098]	



### Specifications: RoHS COMPLIANT

**Material:** Nylon 6/6  
**UL Rating:** 94V-2  
**Color:** Natural  
**Adhesive:** 3M™ Form Tape  
 Generic Form Tape



Part Number	Ref. "A", mm [in.]	Ref. "B", mm [in.]	Ref. "C", mm [in.]	Ref. "D", mm [in.]	Ref. "E", mm [in.]	Ref. "F", mm [in.]	Pkg.
PCMAH-FW-19	20.0 [0.787]	6.8 [0.268]	14.0 [0.551]	3.2 [0.126]	13.2 [0.520]	10.0 [0.394]	500
PCMAH-FW-19A	19.9 [0.783]	6.2 [0.244]	11.9 [0.469]	2.6 [0.102]	13.2 [0.520]	10.0 [0.394]	
PCMAH-FW-2N	9.8 [0.386]	4.6 [0.181]	9.5 [0.374]	1.4 [0.055]	6.5 [0.256]	6.4 [0.252]	1000
PCMAH-FW-1M	12.3 [0.484]	6.6 [0.260]	15.9 [0.626]	3.2 [0.126]	5.8 [0.228]	7.0 [0.276]	
PCMAH-FW-1Q	11.7 [0.461]	5.3 [0.209]	10.0 [0.394]	2.0 [0.079]	5.2 [0.205]	6.0 [0.236]	
PCMAH-FW-1S	11.7 [0.461]	5.9 [0.232]	15.9 [0.626]	2.5 [0.098]	5.2 [0.205]	7.0 [0.276]	

all dimension units in millimeter (mm) unless noted otherwise

www.vaisis.com | P: 626-795-6696 | F: 626-795-6896 | Email: sales@vaisis.com

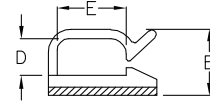
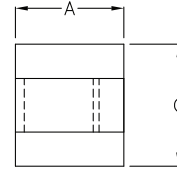
## Side Entry Plastic Wire Saddles Adhesive Base



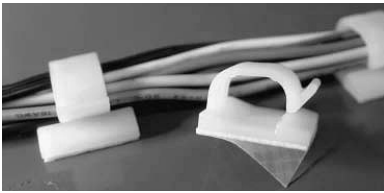
RoHS COMPLIANT

### Specifications:

**Material:** Nylon 6/6  
**UL Rating:** 94V-2  
**Color:** Natural  
**Adhesive:** 3M™ Form Tape  
 Generic Form Tape



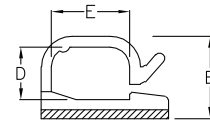
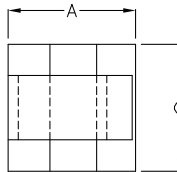
Part Number	Ref. "A", mm [in.]	Ref. "B", mm [in.]	Ref. "C", mm [in.]	Ref. "D", mm [in.]	Ref. "E", mm [in.]	Standard Package
PCMAH-FW-1D	13.4 [0.528]	8.2 [0.323]	16.0 [0.630]	4.7 [0.185]	8.0 [0.315]	500
PCMAH-FW-1DS	11.4 [0.449]	8.2 [0.323]	16.0 [0.630]	4.7 [0.185]	6.0 [0.236]	
PCMAH-FW-1DL	15.4 [0.606]	8.2 [0.323]	16.0 [0.630]	4.7 [0.185]	10.0 [0.394]	
PCMAH-FW-3D	14.4 [0.567]	8.4 [0.331]	16.0 [0.630]	4.8 [0.189]	9.0 [0.354]	
PCMAH-FW-4D	14.4 [0.567]	8.8 [0.346]	16.0 [0.630]	5.2 [0.205]	8.2 [0.323]	
PCMAH-FW-5D	16.9 [0.665]	10.3 [0.406]	16.0 [0.630]	6.7 [0.264]	10.2 [0.402]	



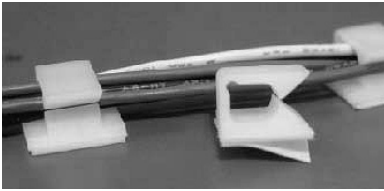
RoHS COMPLIANT

### Specifications:

**Material:** Nylon 6/6  
**UL Rating:** 94V-2  
**Color:** Natural  
**Adhesive:** 3M™ Form Tape  
 Generic Form Tape



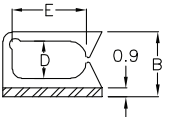
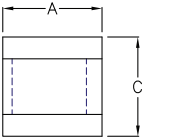
Part Number	Ref. "A", mm [in.]	Ref. "B", mm [in.]	Ref. "C", mm [in.]	Ref. "D", mm [in.]	Ref. "E", mm [in.]	Standard Package
PCMAH-FW-2D	19.0 [0.748]	11.7 [0.461]	19.0 [0.748]	7.9 [0.311]	11.8 [0.465]	500
PCMAH-FW-2DM	16.0 [0.630]	9.6 [0.378]	19.0 [0.748]	6.0 [0.236]	9.0 [0.354]	
PCMAH-FW-2DP	19.0 [0.748]	12.3 [0.484]	19.0 [0.748]	7.9 [0.311]	11.7 [0.461]	
PCMAH-FW-2DS	14.9 [0.587]	9.6 [0.378]	19.0 [0.748]	6.0 [0.236]	7.9 [0.311]	
PCMAH-FW-6D	20.9 [0.823]	12.3 [0.484]	19.0 [0.748]	8.3 [0.327]	13.7 [0.539]	



RoHS COMPLIANT

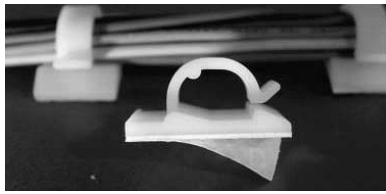
### Specifications:

**Material:** Nylon 6/6  
**UL Rating:** 94V-2  
**Color:** Natural  
**Adhesive:** 3M™ Form Tape



Part Number	Ref. "A", mm [in.]	Ref. "B", mm [in.]	Ref. "C", mm [in.]	Ref. "D", mm [in.]	Ref. "E", mm [in.]	Standard Package
PCMAH-FW-2L	16.2 [0.638]	10.2 [0.402]	16.0 [0.630]	6.0 [0.236]	11.8 [0.465]	500
PCMAH-FW-2LP	14.2 [0.559]	10.0 [0.394]	16.0 [0.630]	6.0 [0.236]	7.5 [0.295]	
PCMAH-FW-2LQ	16.2 [0.638]	10.0 [0.394]	16.0 [0.630]	6.0 [0.236]	9.5 [0.374]	
PCMAH-FW-2K	14.0 [0.551]	7.3 [0.287]	12.1 [0.476]	3.6 [0.142]	10.2 [0.402]	
PCMAH-FW-2KP	12.0 [0.472]	7.2 [0.283]	12.1 [0.476]	3.6 [0.142]	6.2 [0.244]	
PCMAH-FW-2KQ	13.0 [0.512]	7.2 [0.283]	12.1 [0.476]	3.6 [0.142]	8.2 [0.323]	

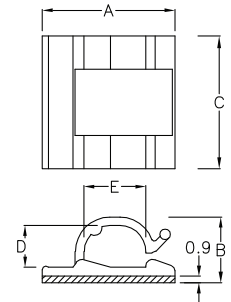
## Side Entry Plastic Wire Saddles Adhesive Base



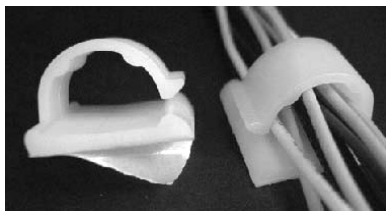
RoHS COMPLIANT

### Specifications:

**Material:** Nylon 6/6  
**UL Rating:** 94V-2  
**Color:** Natural  
**Adhesive:** 3M™ Form Tape



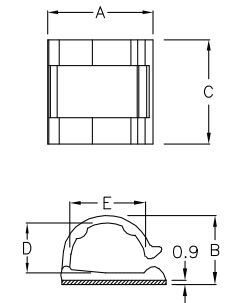
Part Number	Ref. "A", mm [in.]	Ref. "B", mm [in.]	Ref. "C", mm [in.]	Ref. "D", mm [in.]	Ref. "E", mm [in.]	Standard Package
PCMAH-FW-2DA	25.4 [1.000]	12.2 [0.480]	15.6 [0.614]	7.9 [0.311]	11.7 [0.461]	500
PCMAH-FW-2DC	25.4 [1.000]	15.5 [0.610]	15.9 [0.626]	11.1 [0.437]	11.7 [0.461]	
PCMAH-FW-2DL	25.4 [1.000]	12.2 [0.480]	25.4 [1.000]	7.9 [0.311]	11.8 [0.465]	



RoHS COMPLIANT

### Specifications:

**Material:** Nylon 6/6  
**UL Rating:** 94V-2  
**Color:** Natural  
**Adhesive:** 3M™ Form Tape



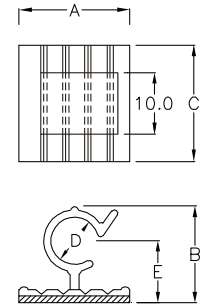
Part Number	Ref. "A", mm [in.]	Ref. "B", mm [in.]	Ref. "C", mm [in.]	Ref. "D", mm [in.]	Ref. "E", mm [in.]	Standard Package
PCMAH-FW-2DK	25.7 [1.012]	16.4 [0.646]	25.4 [1.000]	11.8 [0.465]	18.4 [0.724]	200
PCMAH-FW-2DJ	40.0 [1.575]	26.3 [1.035]	40.0 [1.575]	20.2 [0.795]	28.8 [1.134]	50



RoHS COMPLIANT

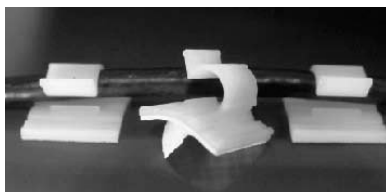
### Specifications:

**Material:** Nylon 6/6  
**UL Rating:** 94V-2  
**Color:** Natural  
**Adhesive:** 3M™ Form Tape  
 Generic Form Tape



Flexible to Fit Contoured Surface

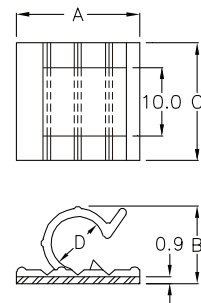
Part Number	Ref. "A", mm [in.]	Ref. "B", mm [in.]	Ref. "C", mm [in.]	Ref. "D", ø, mm [in.]	Ref. "E", mm [in.]	Standard Package
PCMAH-FW-1CH	18.2 [0.717]	13.3 [0.524]	19.0 [0.748]	ø5.0 [0.197]	8.5 [0.335]	500
PCMAH-FW-2CH	18.2 [0.717]	15.4 [0.606]	19.0 [0.748]	ø7.8 [0.307]	10.0 [0.394]	
PCMAH-FW-3CH	18.2 [0.717]	13.3 [0.524]	19.0 [0.748]	ø6.7 [0.264]	8.5 [0.335]	
PCMAH-FW-4CH	23.0 [0.906]	15.4 [0.606]	15.0 [0.591]	ø7.8 [0.307]	10.0 [0.394]	



RoHS COMPLIANT

### Specifications:

**Material:** Nylon 6/6  
**UL Rating:** 94V-2  
**Color:** Natural  
**Adhesive:** 3M™ Form Tape  
 Generic Form Tape



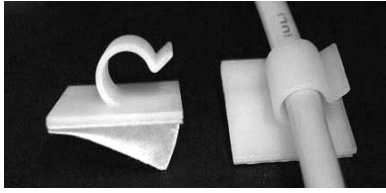
Flexible to Fit Contoured Surface

Part Number	Ref. "A", mm [in.]	Ref. "B", mm [in.]	Ref. "C", mm [in.]	Ref. "D", ø, mm [in.]	Standard Package
PCMAH-FW-2C	18.2 [0.717]	11.0 [0.433]	19.0 [0.748]	ø7.8 [0.307]	500

all dimension units in millimeter (mm) unless noted otherwise

www.vaisis.com | P: 626-795-6696 | F: 626-795-6896 | Email: sales@vaisis.com

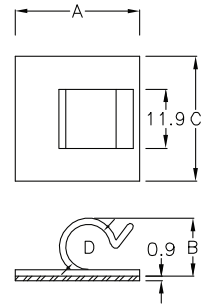
## Side Entry Plastic Wire Saddles Adhesive Base



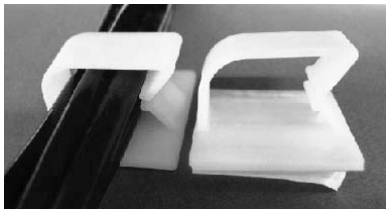
RoHS COMPLIANT

### Specifications:

**Material:** Nylon 6/6  
**UL Rating:** 94V-2  
**Color:** Natural  
**Adhesive:** 3M™ Form Tape



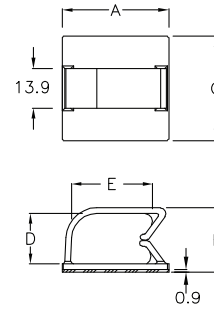
Part Number	Ref. "A", mm [in.]	Ref. "B", mm [in.]	Ref. "C", mm [in.]	Ref. "D", ø, mm [in.]	Standard Package
PCMAH-FW-2DQ	25.1 [0.988]	11.7 [0.461]	25.1 [0.988]	ø9.1 [0.358]	500



RoHS COMPLIANT

### Specifications:

**Material:** Nylon 6/6  
**UL Rating:** 94V-2  
**Color:** Natural  
**Adhesive:** 3M™ Form Tape



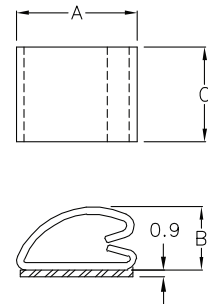
Part Number	Ref. "A", mm [in.]	Ref. "B", mm [in.]	Ref. "C", mm [in.]	Ref. "D", mm [in.]	Ref. "E", mm [in.]	Standard Package
PCMAH-FW-6F	38.0 [1.496]	22.9 [0.902]	37.2 [1.465]	18.0 [0.709]	28.6 [1.126]	100



RoHS COMPLIANT

### Specifications:

**Material:** PVC  
**UL Rating:** 94V-2  
**Color:** Natural  
**Adhesive:** 3M™ Form Tape  
 Generic Form Tape



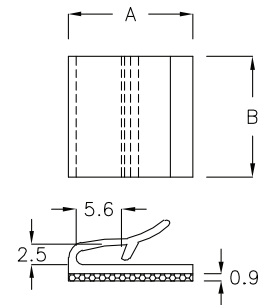
Part Number	Ref. "A", mm [in.]	Ref. "B", mm [in.]	Ref. "C", mm [in.]	Standard Package
PCMAH-FW-7	19.2 [0.756]	10.6 [0.417]	20.0 [0.787]	500
PCMAH-FW-7S	19.2 [0.756]	10.6 [0.417]	15.0 [0.591]	



RoHS COMPLIANT

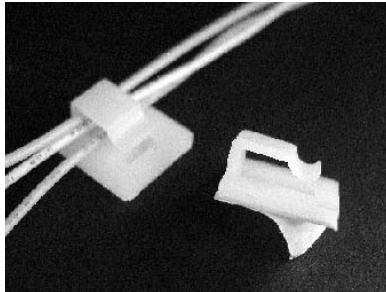
### Specifications:

**Material:** Nylon 6/6  
**UL Rating:** 94V-2  
**Color:** Natural  
**Adhesive:** 3M™ Form Tape  
 Generic Form Tape



Part Number	Ref. "A", mm [in.]	Ref. "B", mm [in.]	Standard Package
PCMAH-FW-11	15.5 [0.610]	7.7 [0.303]	500

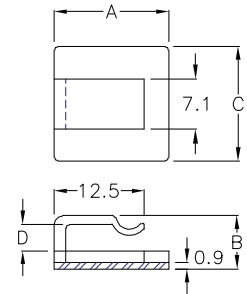
### Side Entry Plastic Wire Saddles Adhesive Base



RoHS COMPLIANT

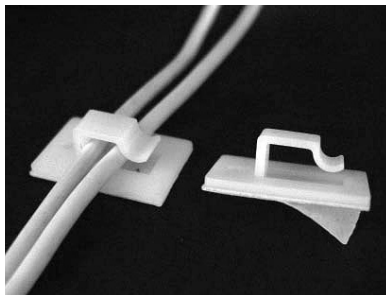
**Specifications:**

**Material:** Nylon 6/6  
**UL Rating:** 94V-2  
**Color:** Natural  
**Adhesive:** 3M™ Form Tape



Part Number	Ref. "A", mm [in.]	Ref. "B", mm [in.]	Ref. "C", mm [in.]	Ref. "D", mm [in.]	Standard Package
PCMAH-FDW-1	16.0 [0.630]	7.4 [0.291]	16.0 [0.630]	16.0 [0.630]	500

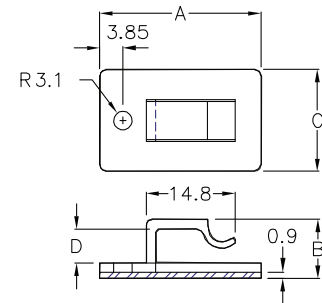
### Side Entry Plastic Wire Saddles Adhesive Base, Optional Screw Mount



RoHS COMPLIANT

**Specifications:**

**Material:** Nylon 6/6  
**UL Rating:** 94V-2  
**Color:** Natural  
**Adhesive:** 3M™ Form Tape  
**Screw Mount:** M3 (Optional)



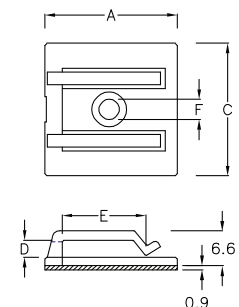
Part Number	Ref. "A", mm [in.]	Ref. "B", mm [in.]	Ref. "C", mm [in.]	Ref. "D", mm [in.]	Standard Package
PCMAH-FDW-3	27.0 [1.063]	9.6 [0.378]	17.0 [1.063]	27.0 [1.063]	500



RoHS COMPLIANT

**Specifications:**

**Material:** Nylon 6/6  
**UL Rating:** 94V-2  
**Color:** Natural  
**Adhesive:** 3M™ Form Tape  
**Screw Mount:** M4 (Optional)

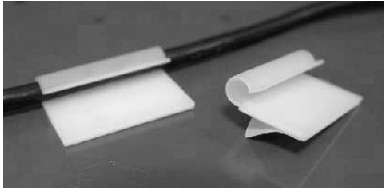


Part Number	Ref. "A", mm[in.]	Ref. "C", mm[in.]	Ref. "D", mm[in.]	Ref. "E", mm[in.]	Mounting Hold Dia. "F", ø, mm [in.]	Pkg.
PCMAH-FSC-01	25.7 [1.012]	25.4 [1.000]	3.3 [0.130]	16.0 [0.630]	ø4.7 [0.185]	500
PCMAH-FSC-02	25.4 [1.000]	25.4 [1.000]	3.0 [0.118]	15.8 [0.622]	ø5.0 [0.197]	

all dimension units in millimeter (mm) unless noted otherwise

www.vaisis.com | P: 626-795-6696 | F: 626-795-6896 | Email: sales@vaisis.com

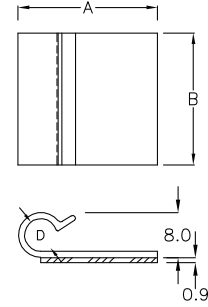
### Side Entry Plastic Wire Saddles Adhesive Base



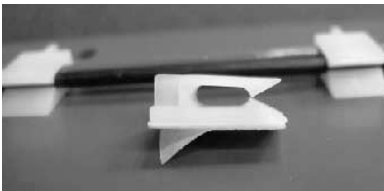
RoHS COMPLIANT

**Specifications:**

**Material:** Nylon 6/6  
**UL Rating:** 94V-2  
**Color:** Natural  
**Adhesive:** 3M™ Form Tape



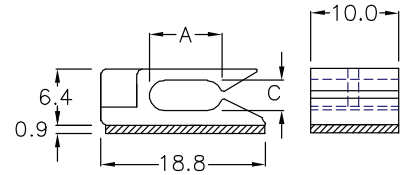
Part Number	Ref. "A", mm [in.]	Ref. "B", mm [in.]	Cable Dia. "D", ø, mm [in.]	Standard Package
PCMAH-FWG-38	24.7 [0.972]	37.5 [1.476]	ø5.8 [0.228]	100



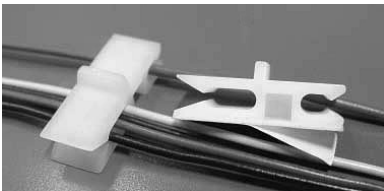
RoHS COMPLIANT

**Specifications:**

**Material:** Nylon 6/6  
**UL Rating:** 94V-2  
**Color:** Natural  
**Adhesive:** 3M™ Form Tape



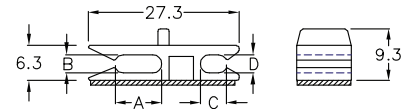
Part Number	Ref. "A", mm [in.]	Ref. "C", mm [in.]	Standard Package
PCMAH-CU-01A	8.2 [0.323]	3.3 [0.130]	1000



RoHS COMPLIANT

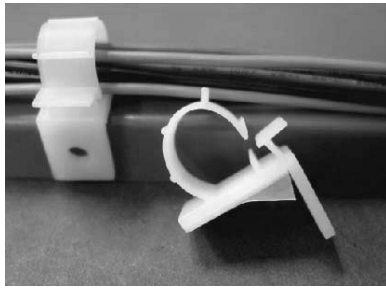
**Specifications:**

**Material:** Nylon 6/6  
**UL Rating:** 94V-2  
**Color:** Natural  
**Adhesive:** 3M™ Form Tape



Part Number	Ref. "A", mm [in.]	Ref. "B", mm [in.]	Ref. "C", mm [in.]	Ref. "D", mm [in.]	Standard Package
PCMAH-CU-01D	8.6 [0.339]	3.3 [0.130]	4.9 [0.193]	3.3 [0.130]	1000

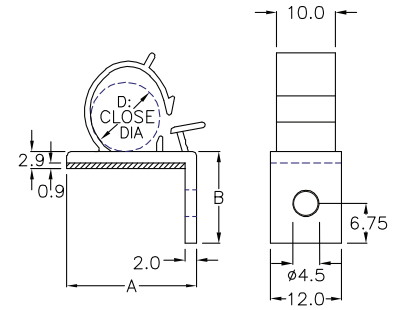
### Plastic Locking Quick Clips Adhesive Base



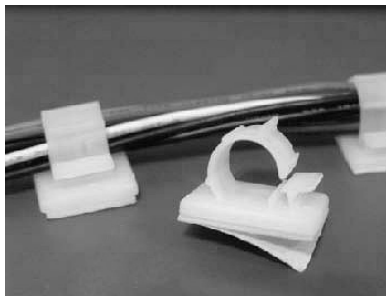
RoHS COMPLIANT

**Specifications:**

- Material:** Nylon 6/6
- UL Rating:** 94V-2
- Color:** Natural
- Adhesive:** 3M™ Form Tape
- Screw Mount:** M4 (Optional)



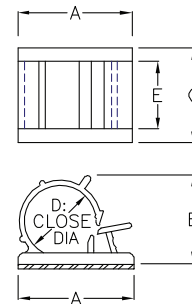
Part Number	Ref. "A", mm [in.]	Ref. "B", mm [in.]	Close/Bundle Dia. "D", ø, mm [in.]	Standard Package
PCMAH-LFW-3	22.0 [0.866]	15.5 [0.610]	ø11.7 [0.461]	200



RoHS COMPLIANT

**Specifications:**

- Material:** Nylon 6/6
- UL Rating:** 94V-2
- Color:** Natural
- Adhesive:** 3M™ Form Tape



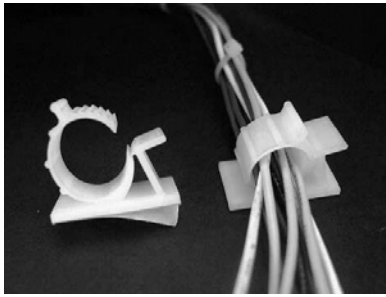
Part Number	Ref. "A", mm [in.]	Ref. "B", mm [in.]	Ref. "C", mm [in.]	Close/Bundle Dia. "D", mm [in.]	Ref. "E", mm [in.]	Standard Package
PCMAH-FW-4S	22.0 [0.866]	18.6 [0.732]	16.0 [0.630]	11.7 [0.461]	10.0 [0.394]	200
PCMAH-FW-3	25.0 [0.984]	16.7 [0.657]	19.6 [0.772]	9.0 [0.354]	12.0 [0.472]	
PCMAH-FW-3A	19.0 [0.748]	13.6 [0.535]	19.0 [0.748]	6.8 [0.268]	9.0 [0.354]	
PCMAH-FW-3S	21.0 [0.827]	13.1 [0.516]	19.0 [0.748]	7.8 [0.307]	9.0 [0.354]	
PCMAH-FW-3L	21.6 [0.850]	15.8 [0.622]	16.8 [0.661]	10.4 [0.409]	12.0 [0.472]	
PCMAH-FW-4	29.8 [1.173]	27.2 [1.071]	19.8 [0.780]	12.6 [0.496]	14.7 [0.579]	100
PCMAH-FW-4L	33.5 [1.319]	31.0 [1.220]	24.8 [0.976]	19.0 [0.748]	16.2 [0.638]	

all dimension units in millimeter (mm) unless noted otherwise

www.vaisis.com | P: 626-795-6696 | F: 626-795-6896 | Email: sales@vaisis.com

**Vaisis**

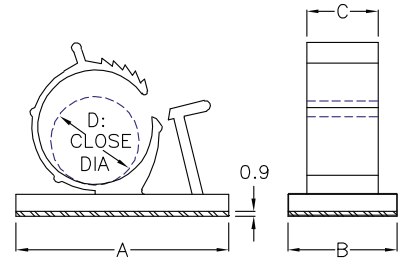
## Plastic Locking Quick Clips Adhesive Base



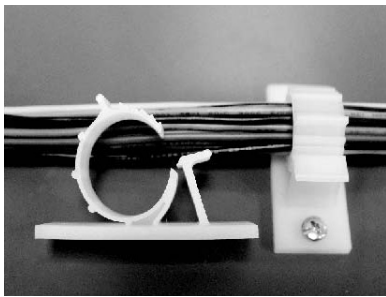
RoHS COMPLIANT

### Specifications:

**Material:** Nylon 6/6  
**UL Rating:** 94V-2  
**Color:** Natural  
**Adhesive:** 3M™ Form Tape



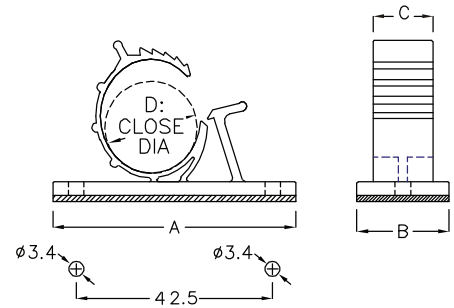
Part Number	Ref. "A", mm [in.]	Ref. "B", mm [in.]	Ref. "C", mm [in.]	Close/Bundle Dia. "D", ø, mm [in.]	Standard Package
PCMAH-FW-33	30.0 [1.181]	16.0 [0.630]	12.0 [0.472]	ø10.5-14.5 [0.413-0.571]	200
PCMAH-FW-33A	25.5 [1.004]	16.0 [0.630]	12.0 [0.472]	ø10.5-14.5 [0.413-0.571]	
PCMAH-FW-35	35.0 [1.378]	20.0 [0.787]	12.9 [0.508]	ø14.5-18.5 [0.571-0.728]	100
PCMAH-FW-39	39.0 [1.535]	20.0 [0.787]	12.9 [0.508]	ø18.5-22.5 [0.728-0.886]	



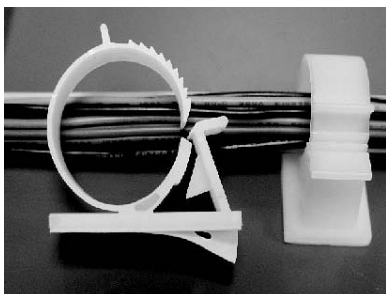
RoHS COMPLIANT

### Specifications:

**Material:** Nylon 6/6  
**UL Rating:** 94V-2  
**Color:** Natural  
**Adhesive:** 3M™ Form Tape  
**Screw Mount:** M3 (Optional)



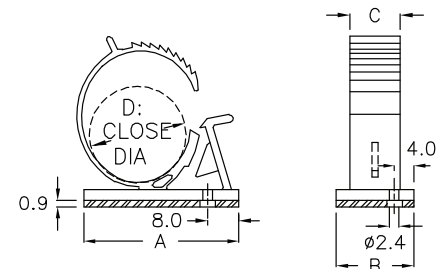
Part Number	Ref. "A", mm [in.]	Ref. "B", mm [in.]	Ref. "C", mm [in.]	Close/Bundle Dia. "D", ø, mm [in.]	Standard Package
PCMAH-FWP-33	52.5 [2.067]	20.0 [0.787]	13.0 [0.512]	ø10.5-13.5 [0.413-0.531]	200
PCMAH-FWP-52	52.5 [2.067]	20.0 [0.787]	13.0 [0.512]	ø14.5-17.5 [0.571-0.689]	100



RoHS COMPLIANT

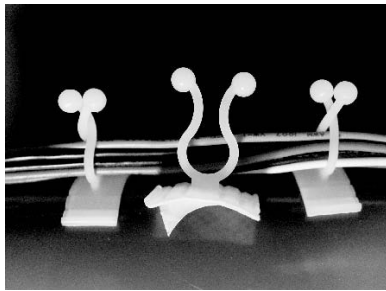
### Specifications:

**Material:** Nylon 6/6  
**UL Rating:** 94V-2  
**Color:** Natural  
**Adhesive:** 3M™ Form Tape  
**Screw Mount:** M3 Self-Tapping (Optional)



Part Number	Ref. "A", mm [in.]	Ref. "B", mm [in.]	Ref. "C", mm [in.]	Close/Bundle Dia. "D", ø, mm [in.]	Standard Package
PCMAH-FWP-40	39.9 [1.571]	19.9 [0.783]	12.9 [0.508]	ø22.5-26.5 [0.886-1.043]	200

**Plastic Twist Locks**  
Adhesive Base

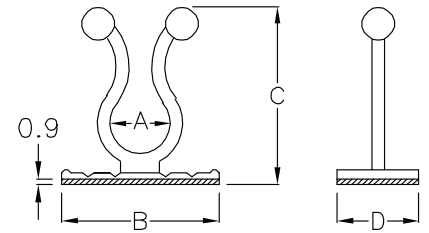


RoHS COMPLIANT

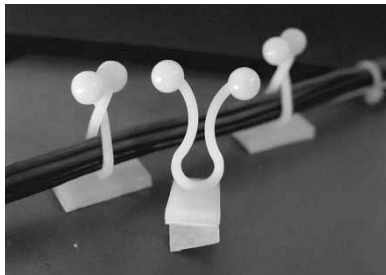
**Specifications:**

**Material:** Nylon 6/6  
**UL Rating:** 94V-2  
**Color:** Natural  
**Adhesive:** 3M™ Form Tape

Flexible to Fit Contoured Surface



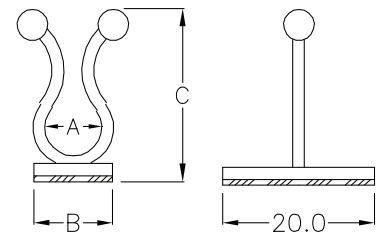
Part Number	Ref. "A", mm [in.]	Ref. "B", mm [in.]	Ref. "C", mm [in.]	Ref. "D", mm [in.]	Close/Bundle Dia., ø, mm [in.]	Standard Package
PCMAH-TLAB-08C	9.5 [0.374]	25.0 [0.984]	28.4 [1.118]	13.0 [0.512]	ø8.2 [0.323]	500



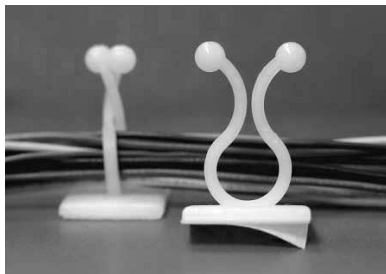
RoHS COMPLIANT

**Specifications:**

**Material:** Nylon 6/6  
**UL Rating:** 94V-2  
**Color:** Natural  
**Adhesive:** 3M™ Form Tape



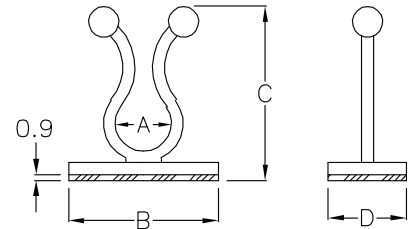
Part Number	Ref. "A", mm [in.]	Ref. "B", mm [in.]	Ref. "C", mm [in.]	Close/Bundle Dia., ø, mm [in.]	Standard Package
PCMAH-TLAB-04	6.7 [0.264]	10.0 [0.394]	28.4 [1.118]	ø5.8 [0.228]	500



RoHS COMPLIANT

**Specifications:**

**Material:** Nylon 6/6  
**UL Rating:** 94V-2  
**Color:** Natural  
**Adhesive:** 3M™ Form Tape



Part Number	Ref. "A", mm [in.]	Ref. "B", mm [in.]	Ref. "C", mm [in.]	Ref. "D", mm [in.]	Close/Bundle Dia., ø, mm [in.]	Standard Package
PCMAH-TLAB-04C	4.9 [0.193]	20.0 [0.787]	25.3 [0.996]	13.0 [0.512]	ø4.0 [0.157]	500
PCMAH-TLAB-04D	4.9 [0.193]	14.5 [0.571]	21.2 [0.835]	15.5 [0.610]	ø4.0 [0.157]	
PCMAH-TLAB-05C	6.0 [0.236]	20.0 [0.787]	24.8 [0.976]	13.0 [0.512]	ø5.0 [0.197]	
PCMAH-TLAB-07	8.7 [0.343]	20.0 [0.787]	22.8 [0.898]	13.0 [0.512]	ø7.0 [0.276]	
PCMAH-TLAB-07C	8.7 [0.343]	15.5 [0.610]	23.1 [0.909]	16.0 [0.630]	ø7.0 [0.276]	
PCMAH-TLAB-08	9.5 [0.374]	24.8 [0.976]	28.0 [1.102]	13.0 [0.512]	ø8.2 [0.323]	
PCMAH-TLAB-08D	9.5 [0.374]	15.5 [0.610]	25.5 [1.004]	20.0 [0.787]	ø8.2 [0.323]	
PCMAH-TLAB-10	10.8 [0.425]	21.0 [0.827]	31.2 [1.228]	19.0 [0.748]	ø10.0 [0.394]	
PCMAH-TLAB-10D	10.8 [0.425]	18.5 [0.728]	27.4 [1.079]	21.0 [0.827]	ø10.0 [0.394]	
PCMAH-TLAB-12A	14.0 [0.551]	22.0 [0.866]	35.5 [1.398]	13.0 [0.512]	ø12.5 [0.492]	
PCMAH-TLAB-13	14.8 [0.583]	22.0 [0.866]	35.6 [1.402]	13.0 [0.512]	ø13.0 [0.512]	
PCMAH-TLAB-13A	14.8 [0.583]	25.0 [0.984]	35.6 [1.402]	20.0 [0.787]	ø13.3 [0.524]	
PCMAH-TLAB-16	17.8 [0.701]	25.0 [0.984]	39.4 [1.551]	13.0 [0.512]	ø16.2 [0.638]	
PCMAH-TLAB-16C	17.9 [0.705]	25.0 [0.984]	39.4 [1.551]	18.0 [0.709]	ø16.0 [0.630]	
PCMAH-TLAB-22	21.0 [0.827]	25.5 [1.004]	40.7 [1.602]	13.0 [0.512]	ø19.0 [0.748]	

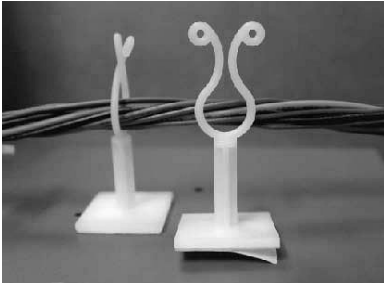
all dimension units in millimeter (mm) unless noted otherwise

www.vaisis.com | P: 626-795-6696 | F: 626-795-6896 | Email: sales@vaisis.com

**Vaisis**

## Plastic Twist Locks

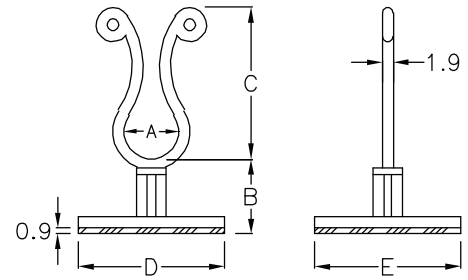
Adhesive Base, Rounded Edges



RoHS COMPLIANT

### Specifications:

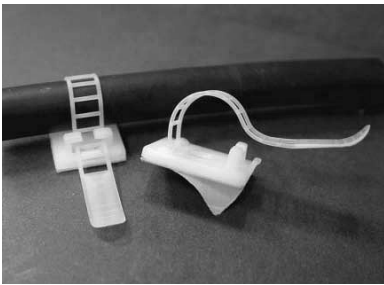
**Material:** Nylon 6/6  
**UL Rating:** 94V-2  
**Color:** Natural  
**Adhesive:** 3M™ Form Tape



Part Number	Ref. "A", mm [in.]	Ref. "B", mm [in.]	Ref. "C", mm [in.]	Ref. "D", mm [in.]	Ref. "E", mm [in.]	Close/Bundle Dia., ø, mm [in.]	Standard Package
PCMAH-TLAB-08S	9.5 [0.374]	6.4 [0.250]	26.3 [1.035]	25.4 [1.000]	25.4 [1.000]	ø8.5 [0.335]	200
PCMAH-TLAB-08H	9.5 [0.374]	12.7 [0.500]	26.3 [1.035]	25.4 [1.000]	25.4 [1.000]	ø8.5 [0.335]	
PCMAH-TLAB-10A	11.6 [0.457]	27.4 [1.079]	28.0 [1.102]	25.4 [1.000]	25.4 [1.000]	ø10.2 [0.402]	
PCMAH-TLAB-11A	11.4 [0.449]	4.9 [0.193]	27.4 [1.079]	25.4 [1.000]	13.0 [0.512]	ø9.7 [0.382]	

## Plastic Adjustable Cable Clamp

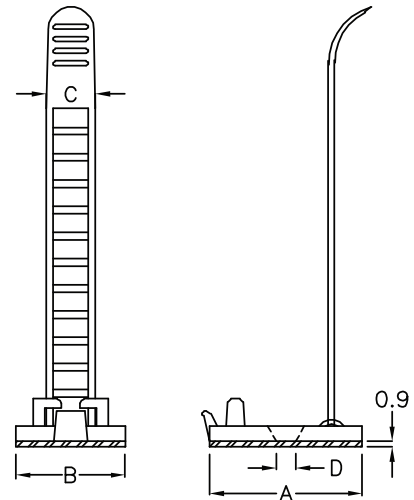
Adhesive Base



RoHS COMPLIANT

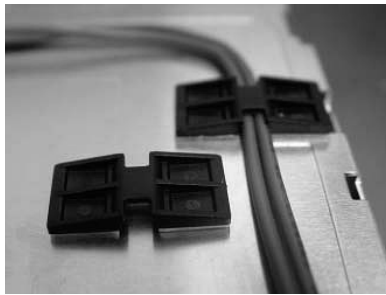
### Specifications:

**Material:** Nylon 6/6  
**UL Rating:** 94V-2  
**Color:** Natural  
**Adhesive:** 3M™ Form Tape  
**Screw Mount:** M3 Flat Head  
 (Optional)



Part Number	Ref. "A", mm [in.]	Ref. "B", mm [in.]	Ref. "C", mm [in.]	Screw Hole Dia. "D", ø, mm [in.]	Max. Bundle Dia. ø, mm [in.]	Standard Package
PCMAH-FWA-13	25.0 [0.984]	18.0 [0.709]	7.9 [0.311]	ø3.5 [0.138]	ø13.0 [0.512]	200
PCMAH-FWA-17	25.0 [0.984]	18.0 [0.709]	7.9 [0.311]	ø3.5 [0.138]	ø17.0 [0.669]	
PCMAH-FWA-21	25.0 [0.984]	18.0 [0.709]	8.1 [0.319]	ø3.5 [0.138]	ø18.5 [0.728]	
PCMAH-FWA-22	30.5 [1.201]	21.0 [0.827]	12.0 [0.472]	ø3.5 [0.138]	ø22.0 [0.866]	100
PCMAH-FWA-22C	31.8 [1.252]	21.0 [0.827]	12.0 [0.472]	ø3.5 [0.138]	ø22.0 [0.866]	
PCMAH-FWA-26	30.5 [1.201]	21.0 [0.827]	12.0 [0.472]	ø3.5 [0.138]	ø26.0 [1.024]	

## Plastic Flat Wire Mount Adhesive Base



RoHS COMPLIANT

### Specifications:

**Material:** Nylon 6/6  
**UL Rating:** 94V-2  
**Color:** Black  
**Adhesive:** 3M™ Form Tape

Fig 1

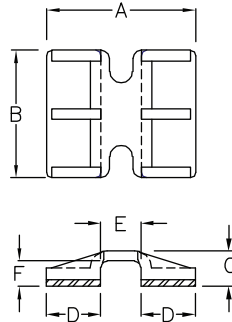
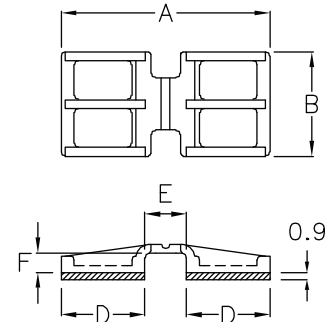


Fig 2



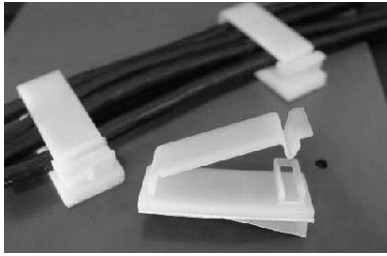
Part Number	Figure	Ref. "A", mm [in.]	Ref. "B", mm [in.]	Ref. "C", mm [in.]	Ref. "D", mm [in.]	Ref. "E", mm [in.]	Ref. "F", mm [in.]	Standard Package
PCMAH-FWF-1A	1	14.0 [0.551]	12.0 [0.472]	3.6 [0.142]	5.1 [0.201]	3.8 [0.150]	2.7 [0.106]	1000
PCMAH-FWF-1C		24.0 [0.945]	12.0 [0.472]	3.7 [0.146]	9.6 [0.378]	4.8 [0.189]	2.7 [0.106]	500
PCMAH-FWF-1D		20.0 [0.787]	12.0 [0.472]	3.7 [0.146]	7.6 [0.299]	4.8 [0.189]	2.7 [0.106]	
PCMAH-FWF-1M		24.0 [0.945]	12.0 [0.472]	3.9 [0.154]	9.4 [0.370]	5.2 [0.205]	2.9 [0.114]	
PCMAH-FWF-1F	2	24.0 [0.945]	12.0 [0.472]	N/A	9.6 [0.378]	4.8 [0.189]	2.7 [0.106]	
PCMAH-FWF-1N		24.0 [0.945]	12.0 [0.472]	N/A	9.6 [0.378]	4.8 [0.189]	3.2 [0.126]	
PCMAH-FWF-1P		24.0 [0.945]	12.0 [0.472]	N/A	9.4 [0.370]	5.2 [0.205]	3.2 [0.126]	

all dimension units in millimeter (mm) unless noted otherwise

www.vaisis.com | P: 626-795-6696 | F: 626-795-6896 | Email: sales@vaisis.com

Vaisis

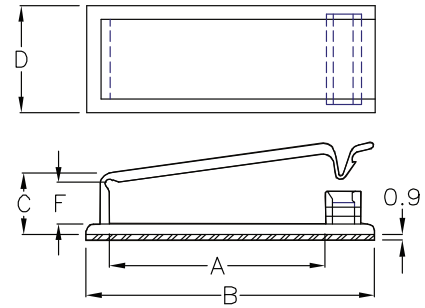
### Plastic Locking Wire Clamp Adhesive Base



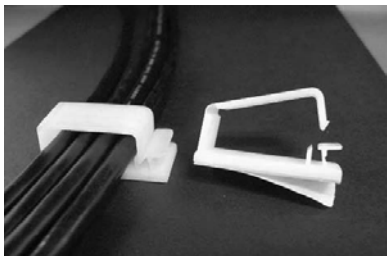
**RoHS COMPLIANT**

**Specifications:**

**Material:** Nylon 6/6  
**UL Rating:** 94V-2  
**Color:** Natural  
**Adhesive:** 3M™ Form Tape



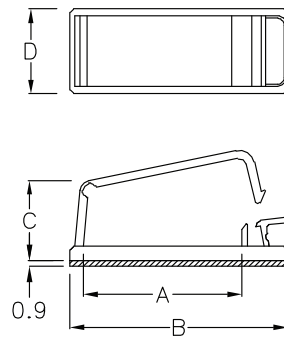
Part Number	Ref. "A", mm [in.]	Ref. "B", mm [in.]	Ref. "C", mm [in.]	Ref. "D", mm [in.]	Ref. "F", mm [in.]	Standard Package
PCMAH-FCW-29	31.6 [1.244]	45.5 [1.791]	10.1 [0.398]	19.0 [0.748]	5.5 [0.217]	100
PCMAH-FCW-30	32.0 [1.260]	45.7 [1.799]	11.4 [0.449]	19.2 [0.756]	7.0 [0.276]	
PCMAH-FCW-40	39.7 [1.563]	53.5 [2.106]	11.4 [0.449]	19.2 [0.756]	7.0 [0.276]	
PCMAH-FCW-40K	39.7 [1.563]	53.5 [2.106]	14.5 [0.571]	19.3 [0.760]	9.5 [0.374]	
PCMAH-FCW-41	41.3 [1.626]	55.2 [2.173]	9.6 [0.378]	18.7 [0.736]	5.0 [0.197]	
PCMAH-FCW-50	64.0 [2.520]	77.5 [3.051]	11.4 [0.449]	19.2 [0.756]	6.5 [0.256]	
PCMAH-FCW-50H	64.6 [2.543]	78.5 [3.091]	17.6 [0.693]	19.0 [0.748]	13.0 [0.512]	



**RoHS COMPLIANT**

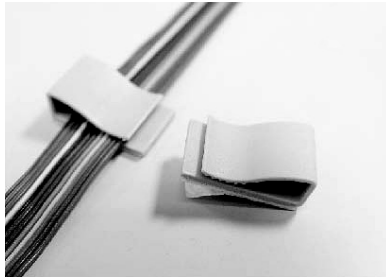
**Specifications:**

**Material:** Nylon 6/6  
**UL Rating:** 94V-2  
**Color:** Natural  
**Adhesive:** 3M™ Form Tape



Part Number	Ref. "A", mm [in.]	Ref. "B", mm [in.]	Ref. "C", mm [in.]	Ref. "D", mm [in.]	Standard Package
PCMAH-FWT-25	31.6 [1.244]	45.0 [1.772]	18.0 [0.709]	19.0 [0.748]	100
PCMAH-FWT-25A	33.0 [1.299]	44.4 [1.748]	10.4 [0.409]	19.0 [0.748]	

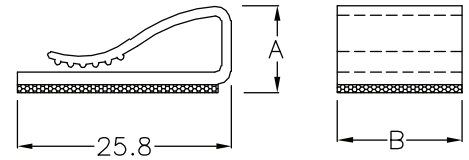
## Plastic Flat Cable Clamps Adhesive Base



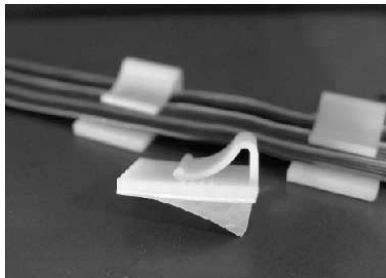
RoHS COMPLIANT

### Specifications:

**Material:** Nylon 6/6  
**UL Rating:** 94V-2  
**Color:** Gray  
**Adhesive:** 3M™ Form Tape



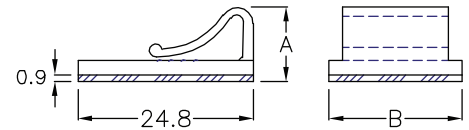
Part Number	Ref. "A", mm [in.]	Ref. "B", mm [in.]	Standard Package
PCMAH-FB-15A	10.4 [0.409]	15.0 [0.591]	1000



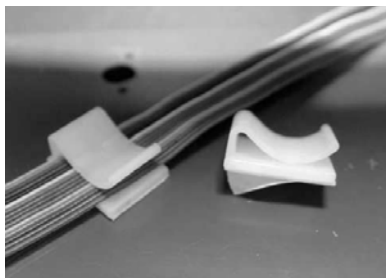
RoHS COMPLIANT

### Specifications:

**Material:** Nylon 6/6  
**UL Rating:** 94V-2  
**Color:** Natural  
**Adhesive:** 3M™ Form Tape



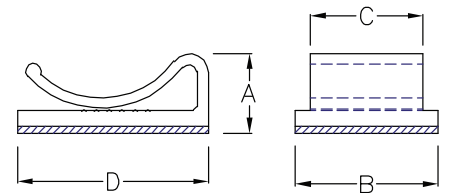
Part Number	Ref. "A", mm [in.]	Ref. "B", mm [in.]	Standard Package
PCMAH-FC-10N	10.5 [0.413]	18.8 [0.740]	500



RoHS COMPLIANT

### Specifications:

**Material:** Nylon 6/6  
**UL Rating:** 94V-2  
**Color:** Natural  
**Adhesive:** 3M™ Form Tape



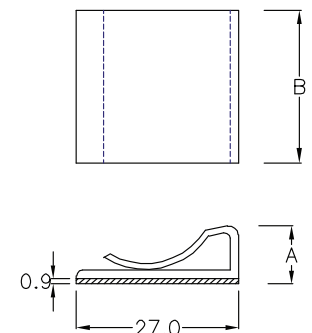
Part Number	Ref. "A", mm [in.]	Ref. "B", mm [in.]	Ref. "C", mm [in.]	Ref. "D", mm [in.]	Standard Package
PCMAH-FC-15N	10.6 [0.417]	19.0 [0.748]	15.0 [0.591]	25.0 [0.984]	200
PCMAH-FC-25N	10.4 [0.409]	25.0 [0.984]	23.0 [0.906]	25.2 [0.992]	



RoHS COMPLIANT

### Specifications:

**Material:** Nylon 6/6  
**UL Rating:** 94V-2  
**Color:** Natural  
**Adhesive:** 3M™ Form Tape



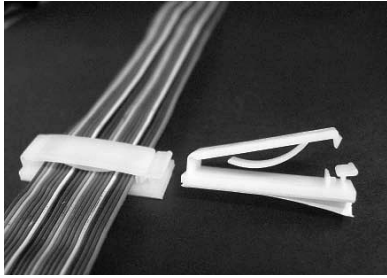
Part Number	Ref. "A", mm [in.]	Ref. "B", mm [in.]	Standard Package
PCMAH-FC-25A	9.7 [0.382]	25.4 [1.000]	500

all dimension units in millimeter (mm) unless noted otherwise

www.vaisis.com | P: 626-795-6696 | F: 626-795-6896 | Email: sales@vaisis.com

Vaisis

## Plastic Flat Cable Clamps Adhesive Base

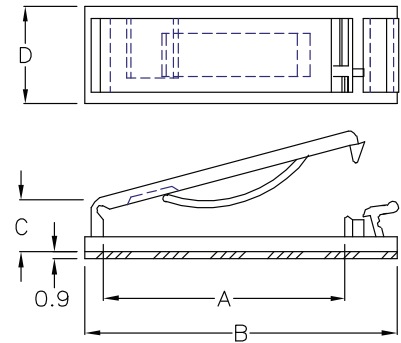


**RoHS COMPLIANT**

### Specifications:

**Material:** Nylon 6/6  
**UL Rating:** 94V-2  
**Color:** Natural  
**Adhesive:** 3M™ Form Tape

Fig. 1



Part Number	Figure	Ref. "A", mm [in.]	Ref. "B", mm [in.]	Ref. "C", mm [in.]	Ref. "D", mm [in.]	Suitable Flat Cable	Standard Package
PCMAH-FCD-25	1	31.5 [1.240]	40.7 [1.602]	6.8 [0.268]	12.7 [0.500]	25 PIN	100
PCMAH-FCD-40		52.0 [2.047]	61.2 [2.409]	6.9 [0.272]	12.7 [0.500]	40 PIN	
PCMAH-FCD-25A		31.1 [1.224]	40.4 [1.591]	7.1 [0.280]	12.7 [0.500]	25 PIN	
PCMAH-FCD-27	2	27.0 [1.063]	36.0 [1.417]	10.0 [0.394]	12.7 [0.500]	20 PIN	
PCMAH-FCD-40H		52.0 [2.047]	61.2 [2.409]	6.8 [0.268]	12.7 [0.500]	40 PIN	
PCMAH-FCD-60A	3	62.8 [2.472]	72.2 [2.843]	7.1 [0.280]	12.9 [0.508]	45 PIN	
PCMAH-FCD-60H	4	62.8 [2.472]	72.2 [2.843]	7.1 [0.280]	12.9 [0.508]	45 PIN	

Fig. 2

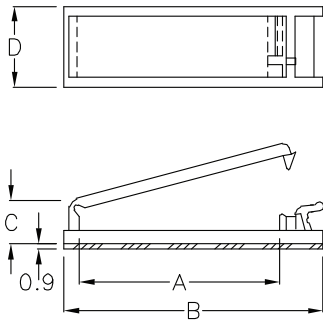


Fig. 3

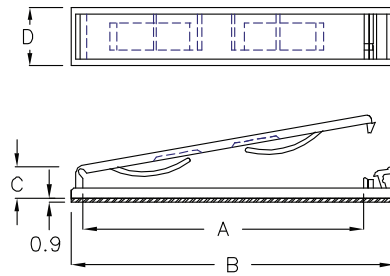
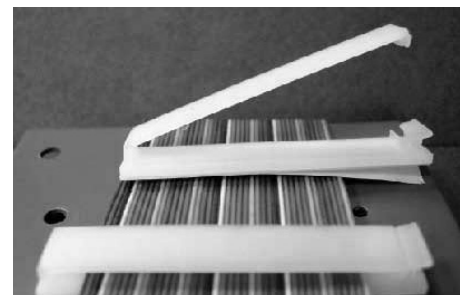
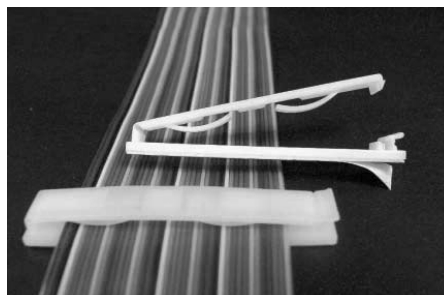
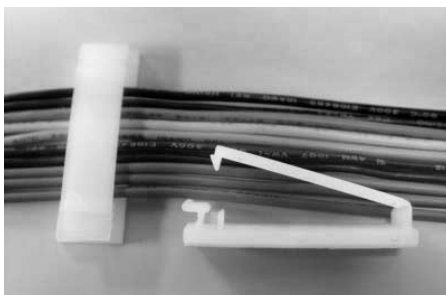
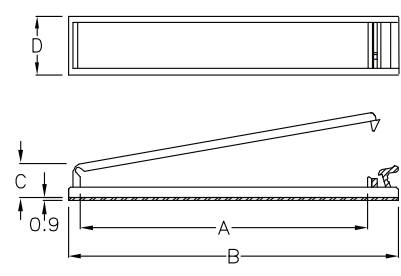
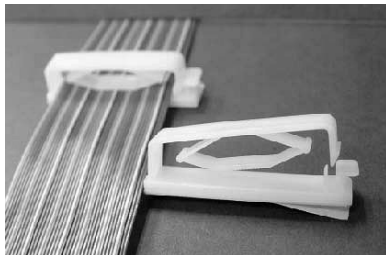


Fig. 4



## Plastic Flat Cable Clamps with Tension Adhesive Base



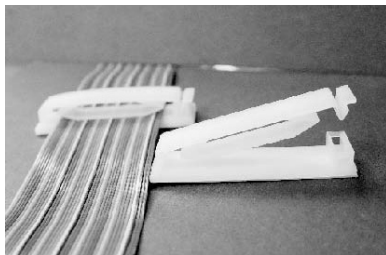
RoHS COMPLIANT

### Specifications:

**Material:** Nylon 6/6  
**UL Rating:** 94V-2  
**Color:** Natural  
**Adhesive:** 3M™ Form Tape



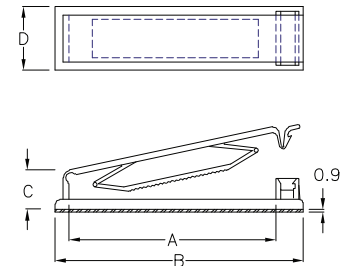
Part Number	Ref. "A", mm [in.]	Ref. "B", mm [in.]	Ref. "C", mm [in.]	Ref. "D", mm [in.]	Suitable Cable	Standard Package
PCMAH-FCC-25C	31.8 [1.252]	45.0 [1.772]	15.2 [0.598]	19.0 [0.748]	25 PIN	100
PCMAH-FCC-25K	31.3 [1.232]	40.7 [1.602]	6.4 [0.252]	10.0 [0.394]	25 PIN	
PCMAH-FCC-30	32.0 [1.260]	44.8 [1.764]	15.8 [0.622]	18.5 [0.728]	30 PIN	
PCMAH-FCC-40	54.0 [2.126]	67.0 [2.638]	15.8 [0.622]	15.8 [0.622]	40 PIN	
PCMAH-FCC-40C	53.8 [2.118]	66.0 [2.598]	12.0 [0.472]	10.2 [0.402]	40 PIN	
PCMAH-FCC-41	54.0 [2.126]	67.0 [2.638]	15.8 [0.622]	15.8 [0.622]	40 PIN	
PCMAH-FCC-41A	53.7 [2.114]	66.7 [2.626]	16.1 [0.634]	12.8 [0.504]	40 PIN	
PCMAH-FCC-50	65.2 [2.567]	78.3 [3.083]	15.8 [0.622]	18.8 [0.740]	50 PIN	
PCMAH-FCC-50D	64.3 [2.531]	77.0 [3.031]	11.3 [0.445]	10.0 [0.394]	50 PIN	
PCMAH-FCC-50F	63.7 [2.508]	76.2 [3.000]	15.1 [0.594]	19.0 [0.748]	50 PIN	
PCMAH-FCC-64	83.5 [3.287]	97.5 [3.839]	15.8 [0.622]	16.0 [0.630]	64 PIN	



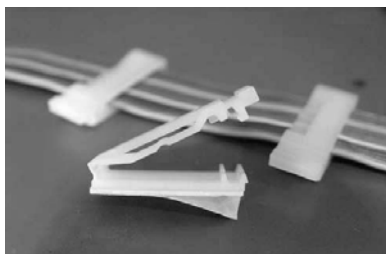
RoHS COMPLIANT

### Specifications:

**Material:** Nylon 6/6  
**UL Rating:** 94V-2  
**Color:** Natural  
**Adhesive:** 3M™ Form Tape



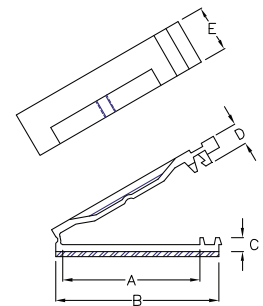
Part Number	Ref. "A", mm [in.]	Ref. "B", mm [in.]	Ref. "C", mm [in.]	Ref. "D", mm [in.]	Suitable Cable	Standard Package
PCMAH-FWY-50	64.0 [2.520]	77.0 [3.031]	11.8 [0.465]	20.0 [0.787]	50 PIN	100



RoHS COMPLIANT

### Specifications:

**Material:** Nylon 6/6  
**UL Rating:** 94V-2  
**Color:** Natural  
**Adhesive:** 3M™ Form Tape



Part Number	Ref. "A", mm [in.]	Ref. "B", mm [in.]	Ref. "C", mm [in.]	Ref. "D", mm [in.]	Ref. "E", mm [in.]	Suitable Cable	Pkg.
PCMAH-FCM-25S	22.0 [0.866]	28.0 [1.102]	3.0 [0.118]	4.7 [0.185]	10.0 [0.394]	15 PIN	200
PCMAH-FCM-25	29.3 [1.154]	36.5 [1.437]	3.0 [0.118]	4.7 [0.185]	10.0 [0.394]	20 PIN	
PCMAH-FCM-25M	55.8 [2.197]	61.2 [2.409]	4.0 [0.157]	4.7 [0.185]	15.0 [0.591]	40 PIN	100

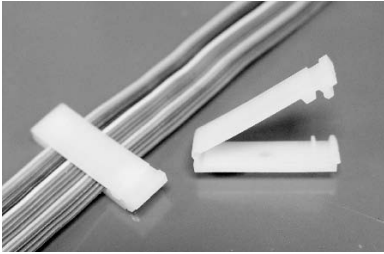
all dimension units in millimeter (mm) unless noted otherwise

www.vaisis.com | P: 626-795-6696 | F: 626-795-6896 | Email: sales@vaisis.com

Vaisis

## Plastic Flat Cable Clamp

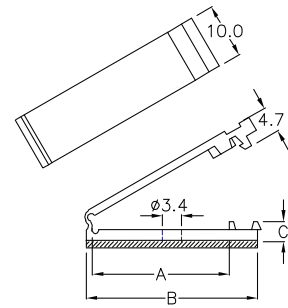
Adhesive Base



**RoHS COMPLIANT**

### Specifications:

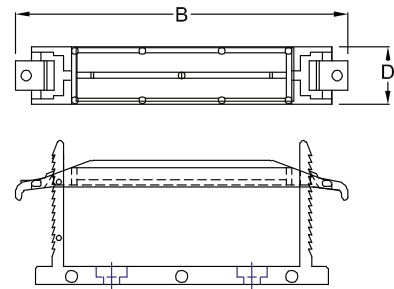
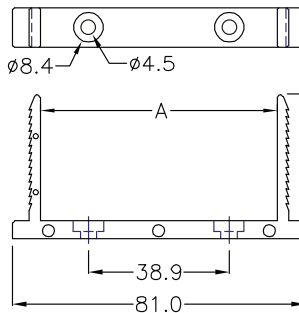
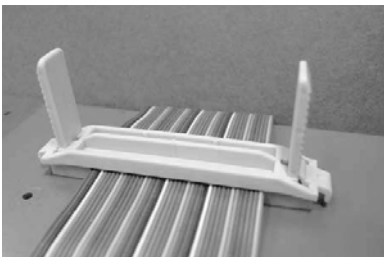
**Material:** Nylon 6/6  
**UL Rating:** 94V-2  
**Color:** Natural  
**Adhesive:** 3M™ Form Tape



Part Number	Ref. "A", mm [in.]	Ref. "B", mm [in.]	Ref. "C", mm [in.]	Suitable Cable	Standard Package
PCMAH-FCM-25H	24.8 [0.976]	31.0 [1.220]	3.6 [0.142]	16 PIN	200

## Plastic Flat Cable Routing Clamps

Adhesive Base

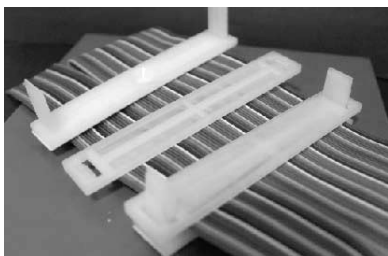


**RoHS COMPLIANT**

### Specifications:

**Material:** Nylon 6/6  
**UL Rating:** 94V-2  
**Color:** Natural  
**Adhesive:** 3M™ Form Tape  
**Screw Mount:** M4 (Optional)

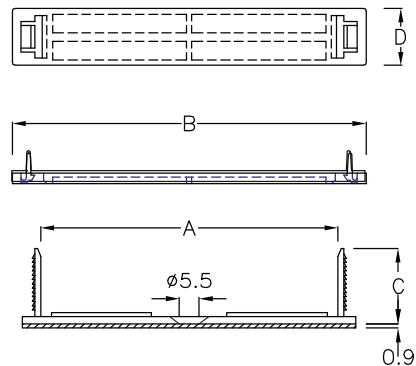
Part Number	Ref. "A", mm [in.]	Ref. "B", mm [in.]	Ref. "C", mm [in.]	Ref. "D", mm [in.]	Suitable Cable	Standard Package
PCMAH-FCF-50	65.4 [2.575]	91.8 [3.614]	40.3 [1.587]	16.0 [0.630]	50 PIN x30	100



**RoHS COMPLIANT**

### Specifications:

**Material:** Nylon 6/6  
**UL Rating:** 94V-2  
**Color:** Natural  
**Adhesive:** 3M™ Form Tape  
**Screw Mount:** M5 Flat Head (Optional)



Part Number	Ref. "A", mm [in.]	Ref. "B", mm [in.]	Ref. "C", mm [in.]	Ref. "D", mm [in.]	Suitable Cable	Standard Package
PCMAH-FCF-64	83.0 [3.268]	99.2 [3.906]	22.0 [0.866]	15.9 [0.626]	64 PIN x12	100